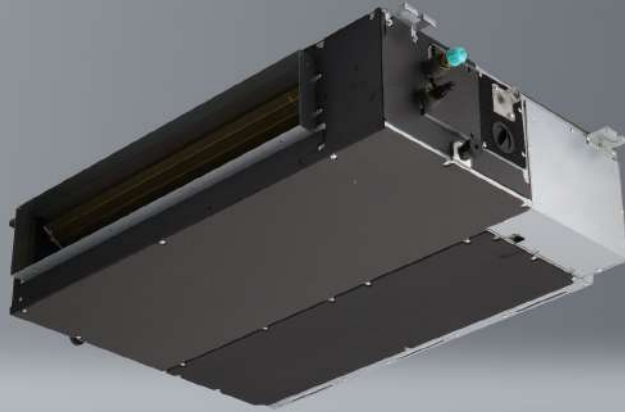


Ducted air conditioner

Nevo N50X ^[R14]



- SCOP 4,0
- 20°C
- 5year WARRANTY
- PZH CERTIFICATE

- DEDICATED TO HEATING
- 1:1 SINGLE
- 1:2 DUAL
- 1:X MULTI
- AIR ZONE

Unit features

Digital DC Inverter SKY®	Automatic purification iClean ⁽¹⁾⁽²⁾	Electrostatic HD iAIR filter	Turbo eMOTO mode ⁽¹⁾	Wide-angle eMOTO air supply	Air supply eMOTO control system	Eco eMOTO mode ⁽¹⁾⁽²⁾	SMART wi-fi ⁽²⁾
Wired controller SMART port	Wireless remote control ⁽²⁾	Wired controller	SMART Follow mode	SMART heating to 8°C ⁽¹⁾⁽²⁾	Autorestart memory	Anti-corrosive gold fins	Drip tray heater
Compressor crankcase heater	Silence mode	Timer	Cooling at low outdoor temp. down to -15°C	Heating at low outdoor temp. down to -20°C	Double-sided condensate drainage	Self-diagnostics	Sleep mode ⁽²⁾
Integrated condensate pump	Fresh air supply ⁽²⁾	ON/OFF remote output	Alarm output	Weekly controller output	Central controller output	Adjustable static pressure	Additional air supply
Synchro - simultaneous operation ⁽²⁾	BMS Modbus ⁽²⁾	BMS Bacnet ⁽²⁾	Air inlet in the back / from down	Remote controller IrDA receiver			

1. Feature not available in Multi Split system. 2. Feature is only optional.

Technical specification

Model				Nevo 5,3 kW	
Capacity	Cooling	Nom. (Min. - Max.)	W	5275 (2550-5861)	
Rated input		Nom. (Min. - Max.)	W	1530 (710-2150)	
Operating current		Nom. (Min. - Max.)	A	6,7 (3,1-9,3)	
Capacity	Heating	Nom. (Min. - Max.)	W	5868 (2198-6154)	
Rated input		Nom. (Min. - Max.)	W	1510 (740-1760)	
Operating current		Nom. (Min. - Max.)	A	6,6 (3,2-7,7)	
Reversible heat pump type				air-to-air	
Design load in cooling mode			kW	5,4	
SEER			W/W	6,5	
Energy efficiency class, cooling				A++	
Annual electric energy consumption, cooling			kWh/a	291	
Design load in heating mode (T _{biv} -7°C)			kW	4,3	
SCOP			W/W	4,0	
Energy efficiency class, heating				A+	
Annual electric energy consumption, heating			kWh/a	1505	
Dehumidification			l/h	1,9	
Maximum energy consumption			W	2950	
Maximum operating current			A	12,8	
Indoor unit				N50Xi R14	
EAN product code				5905567601903	
Fan speed	T / H / M / L		rpm	1192 / 1032 / 948 / 864	
Air flow	T / H / M / L		m ³ /h	911 / 706 / 611 / 515	
Sound pressure level	T / H / M / L		dB(A)	42 / 39 / 35 / 26	
Sound power level			dB(A)	58	
Rated input			W	200	
Operating current			A	0,9	
ESP - External static pressure	Standard		Pa	25	
	Range		Pa	0 - 100	
Net dimensions	W × D × H		mm	880 × 674 × 210	
Gross dimensions	W × D × H		mm	1070 × 725 × 280	
Net weight / Gross weight			kg	24,4 / 29,6	
Condensate drain			mm	25	
Outdoor unit				UO50Xo R14	
EAN product code				5905567601552	
Fan speed	H / M / L		rpm	760 / 705 / 650	
Maximum air flow			m ³ /h	2100	
Sound pressure level			dB(A)	56	
Sound power level			dB(A)	65	
Net dimensions	W × D × H		mm	805 × 330 × 554	
Gross dimensions	W × D × H		mm	915 × 370 × 615	
Bracket spacing	W × D		(mm)	511 × 317	
Net weight / Gross weight			kg	32,5 / 35,2	
Refrigerant	Type			R32	
	GWP			675	
	≤ 5m		kg	1,15	
			TCO ₂ eq	0,78	
Charged (> 5m)		g/mb	12		
Pipe connections	Liquid/Gas		mm (inches)	Φ6,35 / Φ12,7 (1/4" / 1/2")	
Maximum installation length			m	30	
Maximum height difference			m	20	
Compressor type				Rotary DC	
Type of outdoor unit power supply			V-Hz, Ø	220-240-50, 1φ	
electrical protection			A	C16	
Power cables: outdoor unit			pcs × mm ²	3 × 2,5	
Control and power cables: indoor unit - outdoor unit			pcs × mm ²	4 × 1	
Indoor operating range (cooling / heating)			°C	16~32 / 0~30	
Outdoor operating range (cooling / heating)			°C	-15~50 / -20~24	
Compatible systems					
1:1 SINGLE				•	
1:2 DUAL				•	
1:X MULTI				•	