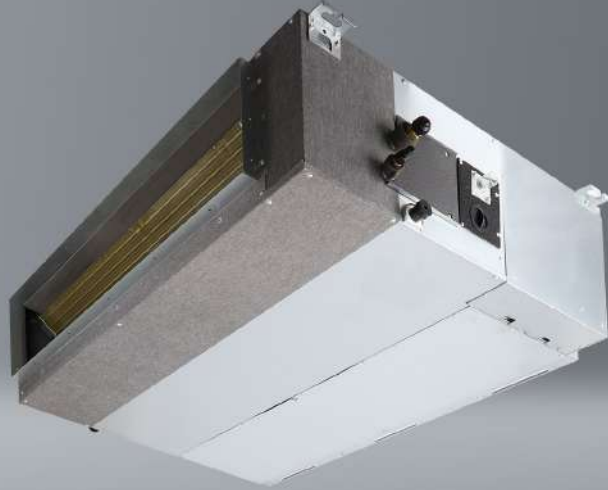


# Ducted air conditioner

Nevo N140X <sup>[R14]</sup>



- SCOP 3,8
- Eco-friendly
- 20°C
- iClean
- Gold fins
- Crankcase heater
- 5 year WARRANTY
- PZH CERTIFICATE

- DEDICATED TO HEATING
- 1:1 SINGLE
- AIR ZONE

## Unit features

SKY inverter Digital DC Inverter SKY®	Automatic purification iClean <sup>(1)(2)</sup>	Electrostatic HD iAIR filter	Turbo Turbo eMOTO mode <sup>(1)</sup>	Wide-angle eMOTO air supply	Air supply eMOTO control system	ECO Eco eMOTO mode <sup>(1)(2)</sup>	SMART wi-fi <sup>(2)</sup>
Wired controller SMART port	Wireless remote control <sup>(2)</sup>	Wired controller	SMART Follow mode	SMART heating to 8°C <sup>(1)(2)</sup>	Autorestart memory	Anti-corrosive gold fins	Drip tray heater
Compressor crankcase heater	Silence mode	Timer	Cooling at low outdoor temp. down to -15°C	Heating at low outdoor temp. down to -20°C	Double-sided condensate drainage	Self-diagnostics	Sleep mode <sup>(2)</sup>
Integrated condensate pump	Fresh air supply <sup>(2)</sup>	ON/OFF remote output	Alarm output	Weekly controller output	Central controller output	Adjustable static pressure	Additional air supply
BMS Modbus <sup>(2)</sup>	BMS Bacnet <sup>(2)</sup>	Air inlet in the back / from down	Remote controller IrDA receiver				

1. Feature not available in Multi Split system. 2. Feature is only optional.

# Technical specification

Model				Nevo 14,1 kW	
Capacity	Cooling	Nom. (Min. - Max.)	W	14067 (3517-15533)	
Rated input		Nom. (Min. - Max.)	W	4800 (880-6000)	
Operating current		Nom. (Min. - Max.)	A	8,1 (1,5-10,1)	
Capacity	Heating	Nom. (Min. - Max.)	W	16119 (4103-18170)	
Rated input		Nom. (Min. - Max.)	W	4500 (950-5700)	
Operating current		Nom. (Min. - Max.)	A	7,6 (1,6-9,6)	
Reversible heat pump type				air-to-air	
Design load in cooling mode			kW	14	
SEER			W/W	6,1	
Energy efficiency class, cooling				A++	
Annual electric energy consumption, cooling			kWh/a	812	
Design load in heating mode (T <sub>biv</sub> -7°C)			kW	11,5	
SCOP			W/W	3,8	
Energy efficiency class, heating				A	
Annual electric energy consumption, heating			kWh/a	4323	
Dehumidification			l/h	5,1	
Maximum energy consumption			W	6900	
Maximum operating current			A	11,6	
Indoor unit				N140Xi R14	
EAN product code				5905567601958	
Fan speed	T / H / M / L	rpm	1020 / 800 / 700 / 600		
Air flow	T / H / M / L	m³/h	2400 / 2040 / 1860 / 1680		
Sound pressure level	T / H / M / L	dB(A)	51,5 / 49 / 47 / 42		
Sound power level		dB(A)	66		
Rated input		W	560		
Operating current		A	2,4		
ESP - External static pressure	Standard	Pa	50		
	Range	Pa	0 - 160		
Net dimensions	W × D × H	mm	1200 × 874 × 300		
Gross dimensions	W × D × H	mm	1405 × 915 × 365		
Net weight / Gross weight		kg	47,6 / 55,8		
Condensate drain		mm	25		
Outdoor unit				UO140Xo R14	
EAN product code				5905567601606	
Fan speed	H / M / L	rpm	830 / 740 / 650		
Maximum air flow		m³/h	7500		
Sound pressure level		dB(A)	65		
Sound power level		dB(A)	74		
Net dimensions	W × D × H	mm	952 × 415 × 1333		
Gross dimensions	W × D × H	mm	1095 × 495 × 1480		
Bracket spacing	W × D	(mm)	634 × 404		
Net weight / Gross weight		kg	103,7 / 118,3		
Refrigerant	Type		R32		
	GWP		675		
	≤ 5m	kg	2,9		
		TCO <sub>2</sub> eq	1,96		
Charged (> 5m)	g/mb	24			
Pipe connections	Liquid/Gas	mm (inches)	Φ9,52 / Φ15,9 (3/8" / 5/8")		
Maximum installation length		m	75		
Maximum height difference		m	30		
Compressor type				Rotary DC	
Type of outdoor unit power supply			V-Hz, Ø	380-420-50, 3φ	
electrical protection			A	C16/3	
Power cables: outdoor unit			pcs × mm²	5 × 2,5	
Control and power cables: indoor unit - outdoor unit			pcs × mm²	4 × 1	
Indoor operating range (cooling / heating)			°C	16~32 / 0~30	
Outdoor operating range (cooling / heating)			°C	-15~50 / -20~24	
Compatible systems					
1:1 SINGLE				•	
1:2 DUAL					
1:X MULTI					