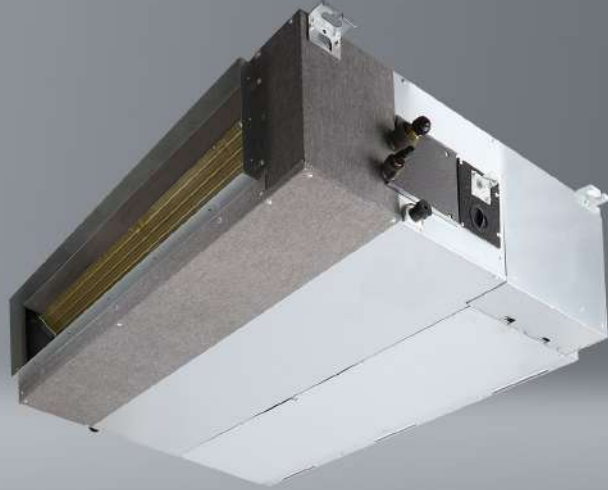


Ducted air conditioner

Nevo N160X ^[R14]



- SCOP 4,0
- Eco-friendly
- 20°C
- iClean
- iAIR filter
- 5 year WARRANTY
- PZH CERTIFICATE

- DEDICATED TO HEATING
- 1:1 SINGLE
- AIR ZONE

Unit features

SKY inverter Digital DC Inverter SKY®	Automatic purification iClean ⁽¹⁾⁽²⁾	Electrostatic HD iAIR filter	Turbo eMOTO mode ⁽¹⁾	Wide-angle eMOTO air supply	Air supply eMOTO control system	Eco eMOTO mode ⁽¹⁾⁽²⁾	SMART wi-fi ⁽²⁾
Wired controller SMART port	Wireless remote control ⁽²⁾	Wired controller	SMART Follow mode	SMART heating to 8°C ⁽¹⁾⁽²⁾	Autorestart memory	Anti-corrosive gold fins	Drip tray heater
Compressor crankcase heater	Silence mode	Timer	Cooling at low outdoor temp. down to -15°C	Heating at low outdoor temp. down to -20°C	Double-sided condensate drainage	Self-diagnostics	Sleep mode ⁽²⁾
Integrated condensate pump	Fresh air supply ⁽²⁾	ON/OFF remote output	Alarm output	Weekly controller output	Central controller output	Adjustable static pressure	Additional air supply
BMS Modbus ⁽²⁾	BMS Bacnet ⁽²⁾	Air inlet in the back / from down	Remote controller IrDA receiver				

1. Feature not available in Multi Split system. 2. Feature is only optional.

Technical specification

Model				Nevo 15,2 kW	
Capacity	Cooling	Nom. (Min. - Max.)	W	15240 (4103-17291)	
Rated input		Nom. (Min. - Max.)	W	5250 (1030-6650)	
Operating current		Nom. (Min. - Max.)	A	8,9 (1,7-11,2)	
Capacity	Heating	Nom. (Min. - Max.)	W	18170 (4396-20515)	
Rated input		Nom. (Min. - Max.)	W	5150 (950-6600)	
Operating current		Nom. (Min. - Max.)	A	8,7 (1,6-11,1)	
Reversible heat pump type				air-to-air	
Design load in cooling mode			kW	15,3	
SEER			W/W	6,1	
Energy efficiency class, cooling				A++	
Annual electric energy consumption, cooling			kWh/a	900	
Design load in heating mode (T _{biv} -7°C)			kW	12,5	
SCOP			W/W	4,0	
Energy efficiency class, heating				A+	
Annual electric energy consumption, heating			kWh/a	4390	
Dehumidification			l/h	5,8	
Maximum energy consumption			W	7500	
Maximum operating current			A	12,7	
Indoor unit				N160Xi R14	
EAN product code				5905567601965	
Fan speed	T / H / M / L	rpm	1060 / 970 / 938 / 905		
Air flow	T / H / M / L	m³/h	2600 / 2210 / 2015 / 1820		
Sound pressure level	T / H / M / L	dB(A)	52,5 / 49 / 47 / 40		
Sound power level		dB(A)	66		
Rated input		W	560		
Operating current		A	2,4		
ESP - External static pressure	Standard	Pa	50		
	Range	Pa	0 - 160		
Net dimensions	W × D × H	mm	1200 × 874 × 300		
Gross dimensions	W × D × H	mm	1405 × 915 × 365		
Net weight / Gross weight		kg	47,4 / 56,1		
Condensate drain		mm	25		
Outdoor unit				UO160Xo R14	
EAN product code				5905567601613	
Fan speed	H / M / L	rpm	830 / 740 / 650		
Maximum air flow		m³/h	7500		
Sound pressure level		dB(A)	65		
Sound power level		dB(A)	74		
Net dimensions	W × D × H	mm	952 × 415 × 1333		
Gross dimensions	W × D × H	mm	1095 × 495 × 1480		
Bracket spacing	W × D	(mm)	634 × 404		
Net weight / Gross weight		kg	107,0 / 121,2		
Refrigerant	Type		R32		
	GWP		675		
	≤ 5m	kg	3,0		
		TCO ₂ eq	2,03		
Charged (> 5m)	g/mb	24			
Pipe connections	Liquid/Gas	mm (inches)	Φ9,52 / Φ15,9 (3/8" / 5/8")		
Maximum installation length		m	75		
Maximum height difference		m	30		
Compressor type				Rotary DC	
Type of outdoor unit power supply			V-Hz, Ø	380-420-50, 3φ	
electrical protection			A	C16/3	
Power cables: outdoor unit			pcs × mm²	5 × 2,5	
Control and power cables: indoor unit - outdoor unit			pcs × mm²	4 × 1	
Indoor operating range (cooling / heating)			°C	16-32 / 0-30	
Outdoor operating range (cooling / heating)			°C	-15-50 / -20-24	
Compatible systems					
1:1 SINGLE				•	
1:2 DUAL					
1:X MULTI					