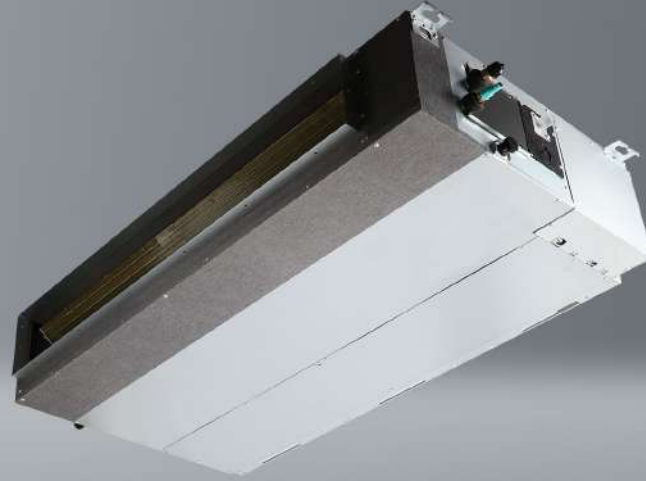


Ducted air conditioner

Nevo N90X ^[R14]



- SCOP 4,0
- Eco-friendly
- 20°C
- iClean
- iAIR filter
- iAIR filter
- 5 year WARRANTY
- PZH CERTIFICATE

- DEDICATED TO HEATING
- 1:1 SINGLE
- 1:2 DUAL
- AIR ZONE

Unit features

| | | | | | | | |
|-------------------------------------------------|-------------------------------------------------|------------------------------|--------------------------------------------|--------------------------------------------|----------------------------------|----------------------------------|----------------------------|
| SKY inverter Digital DC Inverter SKY® | Automatic purification iClean ⁽¹⁾⁽²⁾ | Electrostatic HD iAIR filter | Turbo mode ⁽¹⁾ | Wide-angle eMOTO air supply | Air supply eMOTO control system | Eco eMOTO mode ⁽¹⁾⁽²⁾ | SMART wi-fi ⁽²⁾ |
| Wired controller SMART port | Wireless remote control ⁽²⁾ | Wired controller | SMART Follow mode | SMART heating to 8°C ⁽¹⁾⁽²⁾ | Autorestart memory | Anti-corrosive gold fins | Drip tray heater |
| Compressor crankcase heater | Silence mode | Timer | Cooling at low outdoor temp. down to -15°C | Heating at low outdoor temp. down to -20°C | Double-sided condensate drainage | Self-diagnostics | Sleep mode ⁽²⁾ |
| Integrated condensate pump | Fresh air supply ⁽²⁾ | ON/OFF remote output | Alarm output | Weekly controller output | Central controller output | Adjustable static pressure | Additional air supply |
| Synchro - simultaneous operation ⁽²⁾ | BMS Modbus ⁽²⁾ | BMS Bacnet ⁽²⁾ | Air inlet in the back / from down | Remote controller IrDA receiver | | | |

1. Feature not available in Multi Split system. 2. Feature is only optional.

Technical specification

| Model | | | | Nevo 8,8 kW | |
|------------------------------------------------------|---------------|---------------------|-----------------------------|-------------------|--|
| Capacity | Cooling | Nom. (Min. - Max.) | W | 8792 (2227-9847) | |
| Rated input | | Nom. (Min. - Max.) | W | 2500 (190-3050) | |
| Operating current | | Nom. (Min. - Max.) | A | 10,9 (0,8 -13,3) | |
| Capacity | Heating | Nom. (Min. - Max.) | W | 9378 (2696-10023) | |
| Rated input | | Nom. (Min. - Max.) | W | 2250 (430-2450) | |
| Operating current | | Nom. (Min. - Max.) | A | 9,8 (1,9-10,7) | |
| Reversible heat pump type | | | | air-to-air | |
| Design load in cooling mode | | | kW | 8,8 | |
| SEER | | | W/W | 6,5 | |
| Energy efficiency class, cooling | | | | A++ | |
| Annual electric energy consumption, cooling | | | kWh/a | 474 | |
| Design load in heating mode (T _{biv} -7°C) | | | kW | 8,0 | |
| SCOP | | | W/W | 4,0 | |
| Energy efficiency class, heating | | | | A+ | |
| Annual electric energy consumption, heating | | | kWh/a | 2800 | |
| Dehumidification | | | l/h | 3,0 | |
| Maximum energy consumption | | | W | 4500 | |
| Maximum operating current | | | A | 19,5 | |
| Indoor unit | | | | N90Xi R14 | |
| EAN product code | | | | 5905567601927 | |
| Fan speed | T / H / M / L | rpm | 1100 / 1000 / 950 / 900 | | |
| Air flow | T / H / M / L | m³/h | 2100 / 1800 / 1650 / 1500 | | |
| Sound pressure level | T / H / M / L | dB(A) | 50,5 / 48 / 46 / 40,5 | | |
| Sound power level | | dB(A) | 64 | | |
| Rated input | | W | 350 | | |
| Operating current | | A | 1,5 | | |
| ESP - External static pressure | Standard | Pa | 37 | | |
| | Range | Pa | 0 - 160 | | |
| Net dimensions | W × D × H | mm | 1360 × 774 × 249 | | |
| Gross dimensions | W × D × H | mm | 1570 × 805 × 330 | | |
| Net weight / Gross weight | | kg | 40,5 / 48,2 | | |
| Condensate drain | | mm | 25 | | |
| Outdoor unit | | | | UO90Xo R14 | |
| EAN product code | | | | 5905567601576 | |
| Fan speed | H / M / L | rpm | 900 / 750 / 550 | | |
| Maximum air flow | | m³/h | 3800 | | |
| Sound pressure level | | dB(A) | 62 | | |
| Sound power level | | dB(A) | 70 | | |
| Net dimensions | W × D × H | mm | 946 × 410 × 810 | | |
| Gross dimensions | W × D × H | mm | 1090 × 500 × 885 | | |
| Bracket spacing | W × D | (mm) | 673 × 403 | | |
| Net weight / Gross weight | | kg | 52,8 / 57,3 | | |
| Refrigerant | Type | | R32 | | |
| | GWP | | 675 | | |
| | ≤ 5m | kg | 2,0 | | |
| | | TCO ₂ eq | 1,35 | | |
| Charged (> 5m) | g/mb | 24 | | | |
| Pipe connections | Liquid/Gas | mm (inches) | Φ9,52 / Φ15,9 (3/8" / 5/8") | | |
| Maximum installation length | | m | 50 | | |
| Maximum height difference | | m | 25 | | |
| Compressor type | | | | Rotary DC | |
| Type of outdoor unit power supply | | | V-Hz, Ø | 220-240-50, 1f | |
| electrical protection | | | A | C20 | |
| Power cables: outdoor unit | | | pcs × mm² | 3 × 2,5 | |
| Control and power cables: indoor unit - outdoor unit | | | pcs × mm² | 4 × 1 | |
| Indoor operating range (cooling / heating) | | | °C | 16-32 / 0-30 | |
| Outdoor operating range (cooling / heating) | | | °C | -15-50 / -20-24 | |
| Compatible systems | | | | | |
| 1:1 SINGLE | | | | • | |
| 1:2 DUAL | | | | • | |
| 1:X MULTI | | | | | |